

# VTCI-1500-F

All Metal Isolator



*Vibratec*<sup>®</sup>  
akustikprodukter



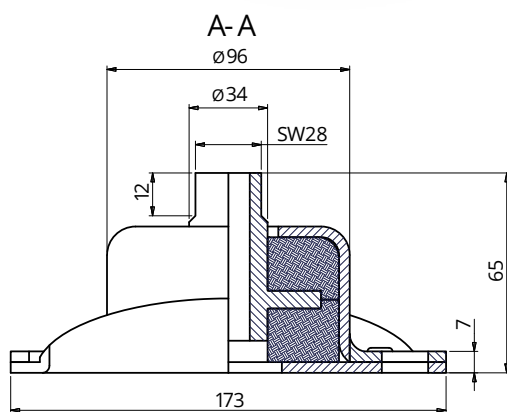
## Description

Vibratec Cushion Isolator for use as elastic fix point. Resilient elements are made of 18/8 stainless steel wire mesh, center mounting pin, casing and flange in steel. Housing is protected by a ceramic coating (KTL)

## Characteristics

A progressive tension/compression isolator with resonance frequency 15-20 Hz throughout the load range.

- Maximum excitation amplitude:  $\pm 0.3$  mm
- Amplification factor:  $< 6$
- Recommended temp. range:  $-90$  °C to  $+600$  °C
- Maximum dynamic overload: 2 g
- Weight: 0.8 kg
- Load Range (daN): 500-1500



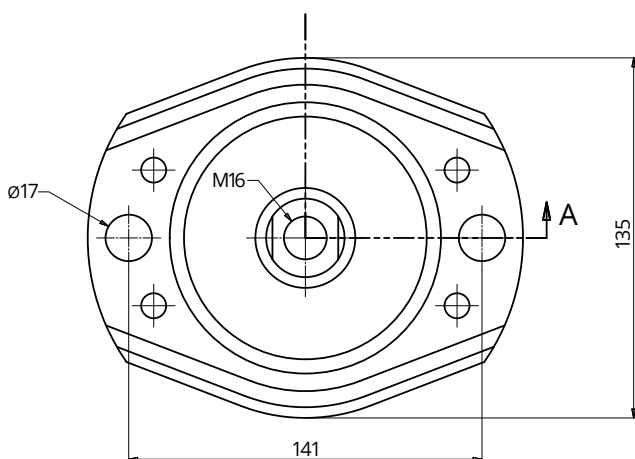
Ref.	Load range in daN (= kg)
VTCl-1500-F	500 - 1500

## Applications

Suspension of machine tools in general, especially crushing machines, grinding mills and generally all reciprocating machinery operating above 30 Hz. Elastic suspension of exhaust pipes with exhaust media of  $650^{\circ}\text{C}$  or more, engines, pumps, compressors on ships and in vehicles. The isolator is ideal to use as fix point of exhaust pipe directly after the first bellow.

## Notes

For smaller loads use VTCl-300F and VTCl-700F. For larger loads, use isolators VTCl-3500F, V318.



### SWEDEN

+46 176 20 78 80  
INFO@VIBRATEC.SE

### NORWAY

+47 33 07 07 50  
INFO@VIBRATEC.NO

### ESTONIA

+372 56 66 29 93  
INFO@VIBRATEC.EE

### DENMARK

+45 49 13 22 44  
INFO@VIBRATEC.DK

### FINLAND

+358 40 258 9117  
PALVELU@3DI.FI

### INDIA

+91 775 599 63 08  
RC@VIBRATEC.IN

### FRANCE

+46 176 20 78 80  
INFO@VIBRATEC.EU