

ALL METAL cushion

Description

All metal resilient element produced of 18/8 steel mesh. The progressive spring rate yields an almost constant natural frequency within a wide load range.

The element is non creeping, has excellent resistance to oils, solvents, water, chemical agents and to extremes of temperature.

Cushions are also available in AISI 316 stainless wire and other special metals.

Characteristics

Load range: 25-250 daN (\approx kg).

Deflection: 2,5-7,5 mm.

Natural frequency: 12-15 Hz.

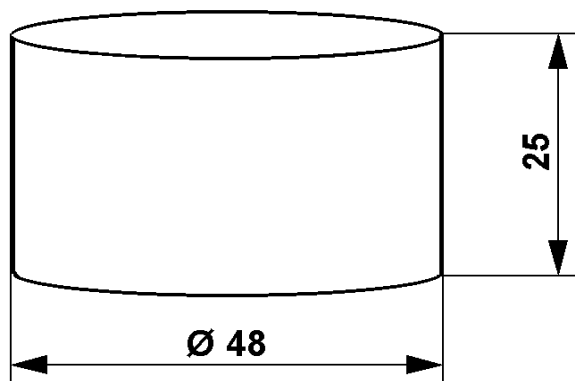
Maximum excitation amplitude: \pm 0,3 mm.

Damping ratio: 15-20 %.

Amplification factor: 3-4.

Dynamic overload: 5 g

Temperature range: -90 °C to +300 °C.



Applications

Isolation of machine tools, thermodynamic machines, transformers etc.

The cushion is suited for vibration isolation of "floating floors".

Note

Also refer to isolator VT 1110 - VT 1140 for floating floors (load range 5-300 kg).

For isolation of machine tools, see also VT 1502 and VT 1504-06.

Norway

P.O. Box 765, N-3196 Horten, Norway
Tel: +47 33 07 07 50 Fax: +47 33 07 00 68
e-mail: apn@apn.no

Sweden

Norrsund 1859, S-760 17 BLIDÖ, Sweden
Tel: +46 176 20 78 80 Fax: +46 176 20 78 99
e-mail: info@vibratec.se