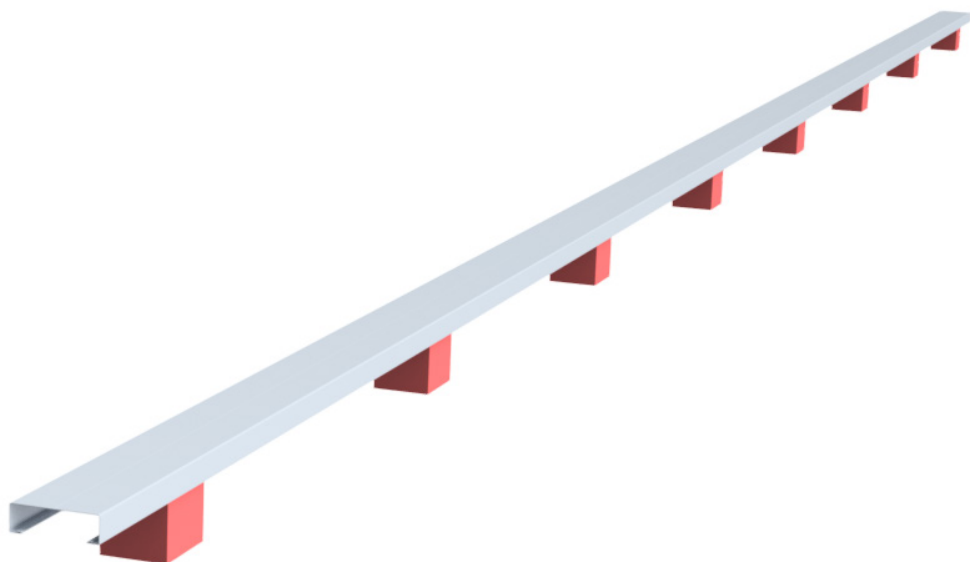
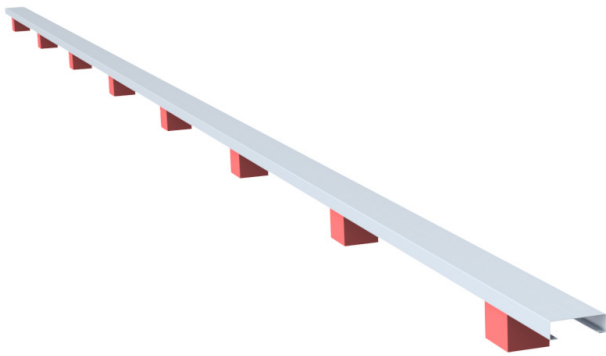


VT-BAT

Floor System



Vibratec[®]
akustikprodukter



Description

Vibratec floor system VT-BAT is a quick and easy-to-install system with discrete isolators. The system comprises of 3 meter long and a width of 48 mm steel battens with isolators (elastic elements) available in 4 different standard heights: 25, 30, 50 and 75 mm (other heights available on request).

Characteristics

Depending on the load and the choice of height resonance frequencies below 6 Hz can be achieved (see frequency curves on next page).

The stiffness can be adjusted by playing on the number of isolators per m² or/and by choosing softer/stiffer material for the isolators, please contact Vibratec for advice.

Color	Type	Load range (kg/m ²) *
Grey	VT-BAT-400	40 - 120
Brown	VT-BAT-510	60 - 240
Red	VT-BAT-570	80 - 310
Blue	VT-BAT-680	120 - 450

* Loads are based on CC 600 mm

Height	Deflection	fn (Hz)
25 mm	1 - 2 mm	> 9 Hz
30 mm	2 - 3 mm	> 8 Hz
50 mm	4 - 7 mm	> 6,5 Hz
75 mm	8 - 12 mm	> 5,5 Hz

Applications

Used for wet or dry floating floors in rehearsal rooms, studios, cinemas, offices and industries.

Also used in sprung floors for dance, gymnastics, sports and stages.

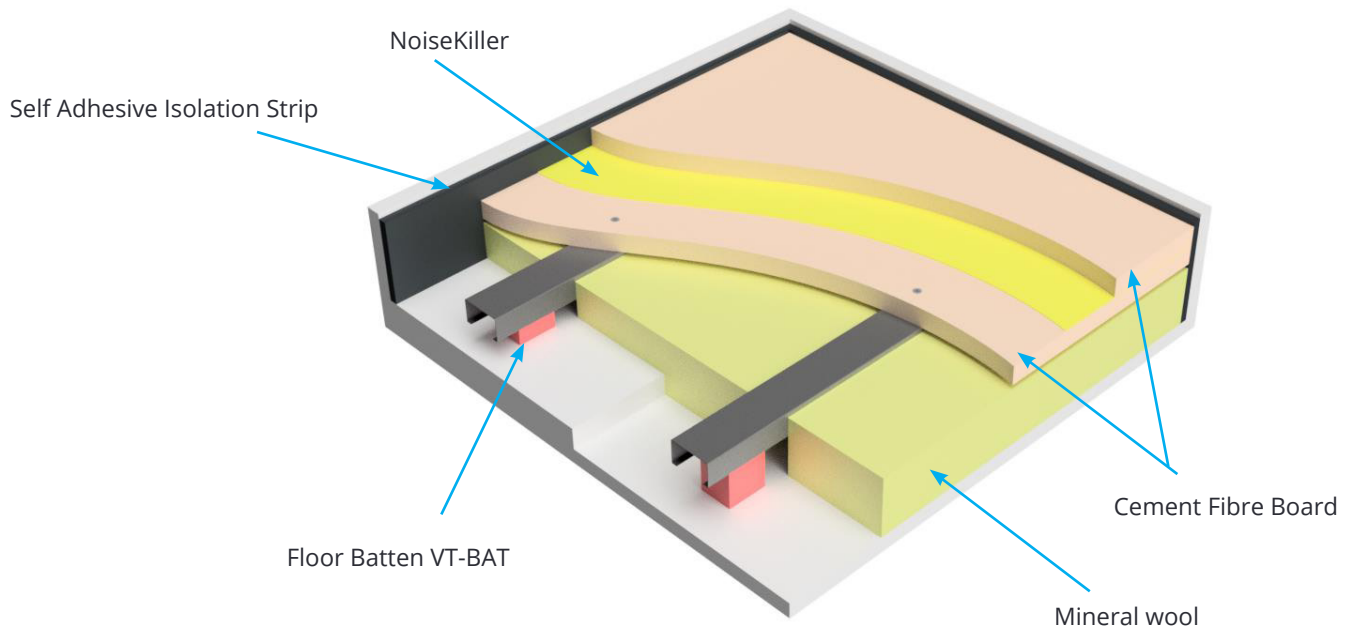
Sweden
Tel: +46 176 20 78 80
e-mail: info@vibratec.se

Norway
Tel: +47 33 07 07 50
e-mail: info@vibratec.no

Denmark
Tel: +45 49 13 22 44
e-mail: info@vibratec.dk

Estonia
Tel: +372 56 66 29 93
e-mail: info@vibratec.ee

Illustration of a typical installation



Installation

Install Self Adhesive Isolation Strips around the perimeter of the floating floor to de-couple the floating floor from the adjacent structure

Install the VT-BAT rails with c/c- distance 600 mm

Place low density mineral wool between the VT-BAT rails (the thickness must be less than the deflected void under the floating floor)

Screw floor panels into the VT-BAT rails.



If walls are going to be standing on the floorsystem, then the amount of isolator pads needs to be calculated to support the extra weight. In above picture, double floor battens have been used at the perimeter of the floor.

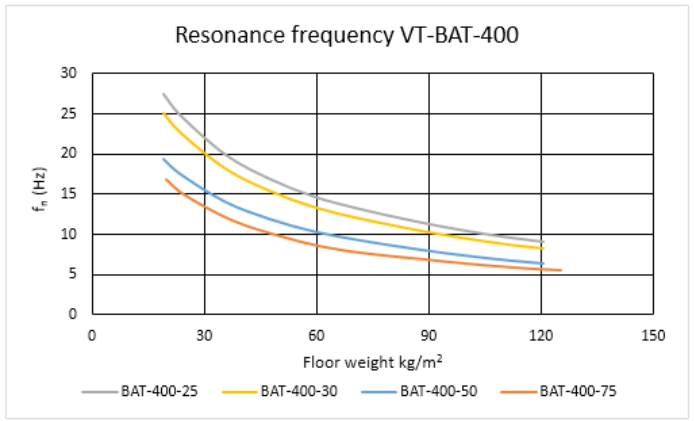
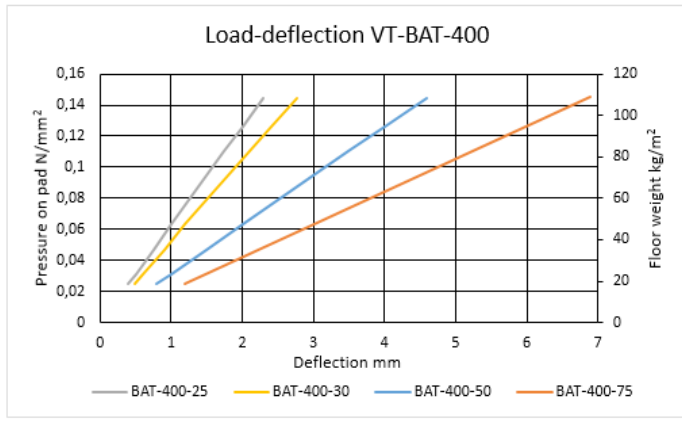
Sweden
Tel: +46 176 20 78 80
e-mail: info@vibratec.se

Norway
Tel: +47 33 07 07 50
e-mail: info@vibratec.no

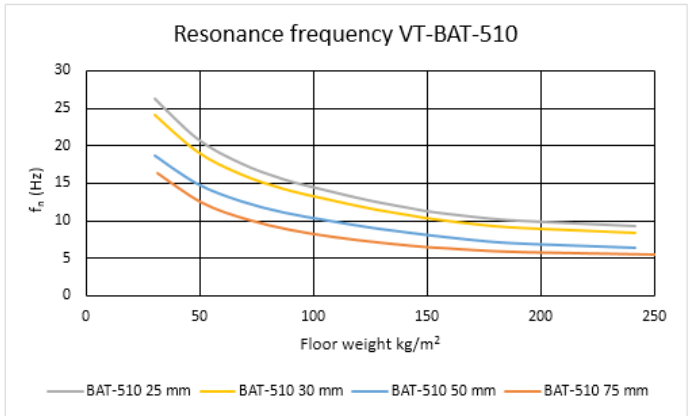
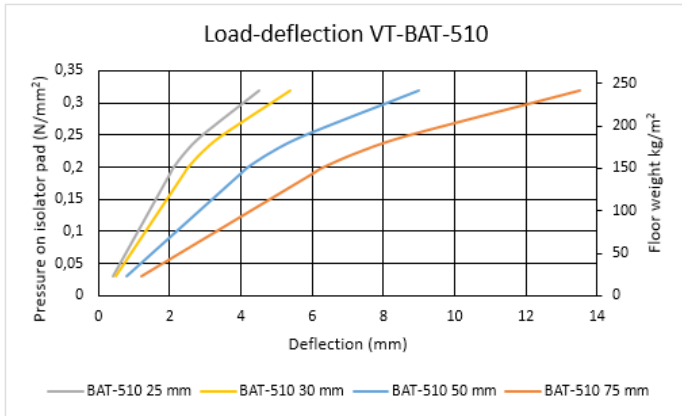
Denmark
Tel: +45 49 13 22 44
e-mail: info@vibratec.dk

Estonia
Tel: +372 56 66 29 93
e-mail: info@vibratec.ee

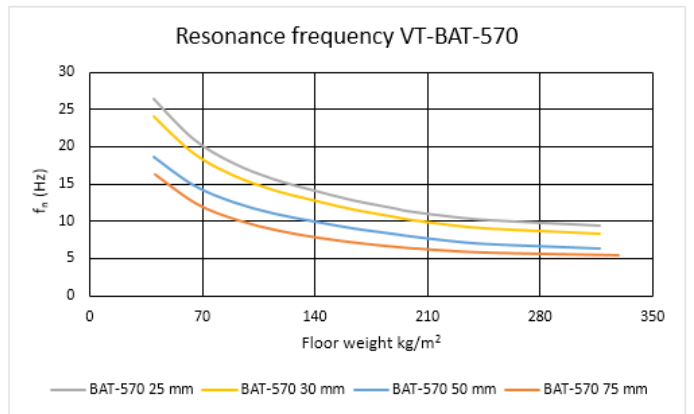
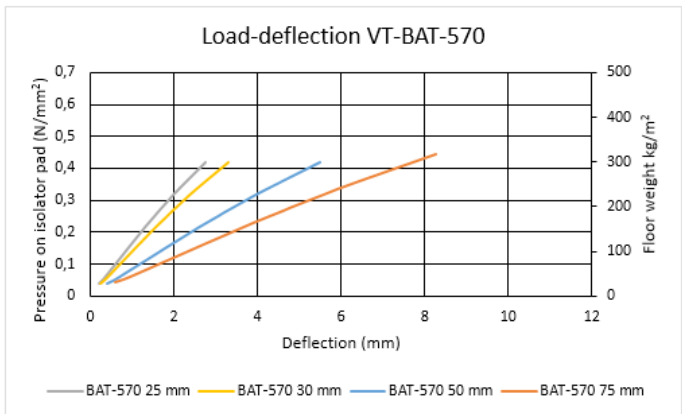
VT-BAT-400



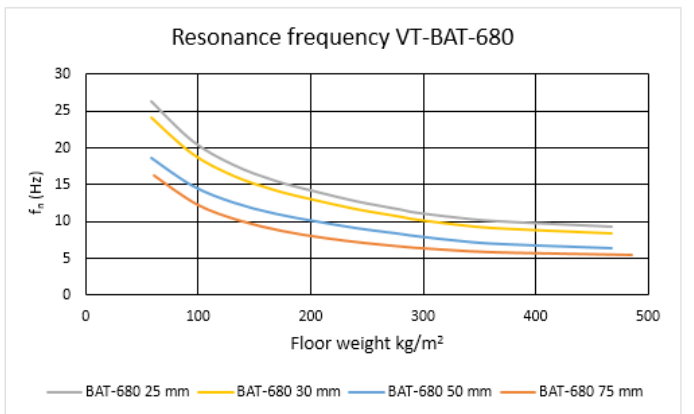
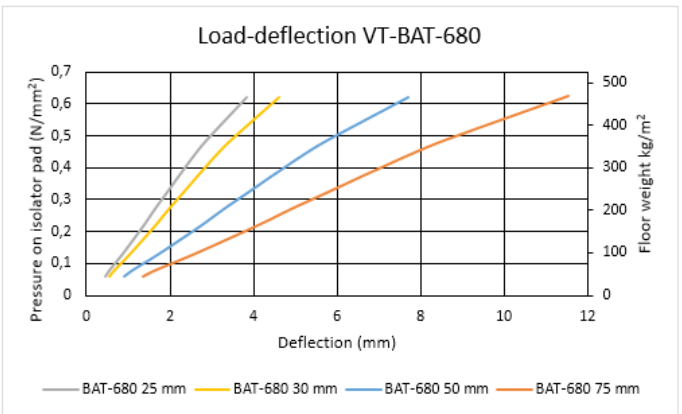
VT-BAT-510



VT-BAT-570



VT-BAT-680



Sweden
Tel: +46 176 20 78 80
e-mail: info@vibratec.se

Norway
Tel: +47 33 07 07 50
e-mail: info@vibratec.no

Denmark
Tel: +45 49 13 22 44
e-mail: info@vibratec.dk

Estonia
Tel: +372 56 66 29 93
e-mail: info@vibratec.ee