

ISOLATOR

Description

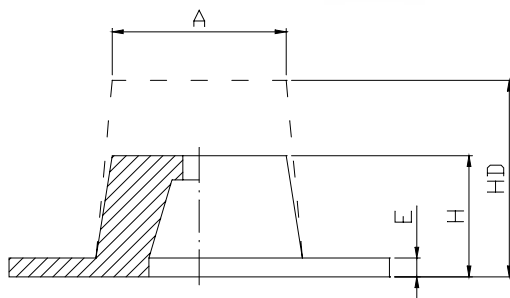
Isolator in neoprene, where metal parts are in vulcanised to prevent corrosion. It is available in 4 different hardness, which is easy to identify by paint marking.

Weight 0,06 – 1,35 kg.

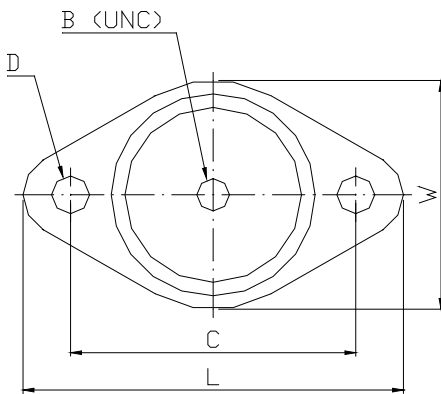
Natural frequency: Type R 9-14 Hz
Type RD 7-10 Hz

Applications

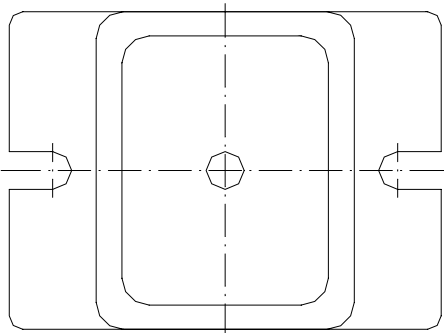
Elastic suspension of compressors, pumps, fans etc. Not suitable for out door applications, then spring isolators are recommended.



R/RD 1-3



R/RD 4



Type	Max load (kg)	Max deflection (mm)		Dimensions in mm										
		Typ		L	W	H	HD*	A	B (UNC)	C	D	E		
		R	RD											
R-1 or RD-1	Blue	16												
	Black	20												
	Red	32	5	10	80	45	25	32	32	5/16"	60	9	5	
	Green	55												
R-2 or RD-2	Blue	60												
	Black	75												
	Red	110	6,3	12,6	99	60	32	45	45	3/8"	76	9	6	
	Green	170												
R-3 or RD-3	Black	114												
	Red	238	6,3	12,6	140	86	45	73	64	1/2"	105	14	7	
	Green	340												
	Grey	500												
R-4 or RD-4	Black	680												
	Red	1020	6,3	12,6	159	118	41	70	76	1/2"	127	14	10	
	Green	1360												
	Grey	1800												

HD* it's for type RD

Norway

P.O. Box 765, N-3196 Horten, Norway
Tel: +47 33 07 07 50 Fax: +47 33 07 00 68
e-mail: apn@apn.no

Sweden

Norrund 1859, S-760 17 BLIDÖ, Sweden
Tel: +46 176 20 78 80 Fax: +46 176 20 78 99
e-mail: info@vibratec.se