

### Complete PIPE CLAMP

#### Description

All metal pipe clamp with resilient elements made of stainless steel 18/8. Ring made of construction steel.

Protection: primer.

#### Application

Resilient mounting for all kinds of pipes. Provides elastic stabilisation of vertical pipes whilst eliminating the tension forces caused by thermal expansion of the pipe. The dimensions of the clamp are shown in table below.

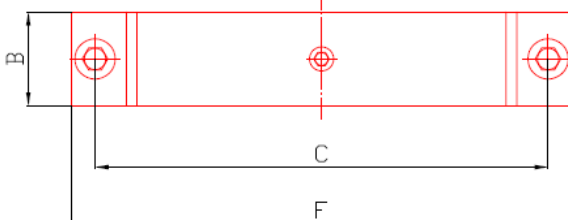
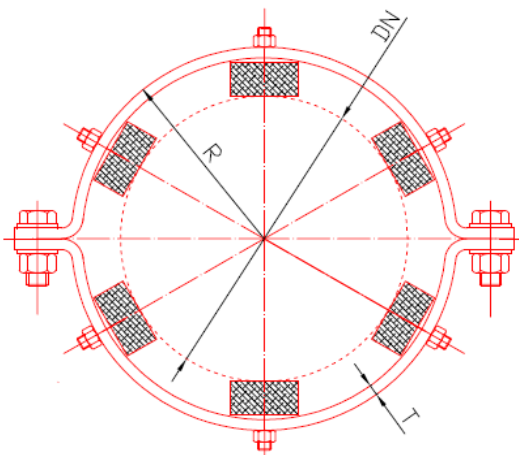
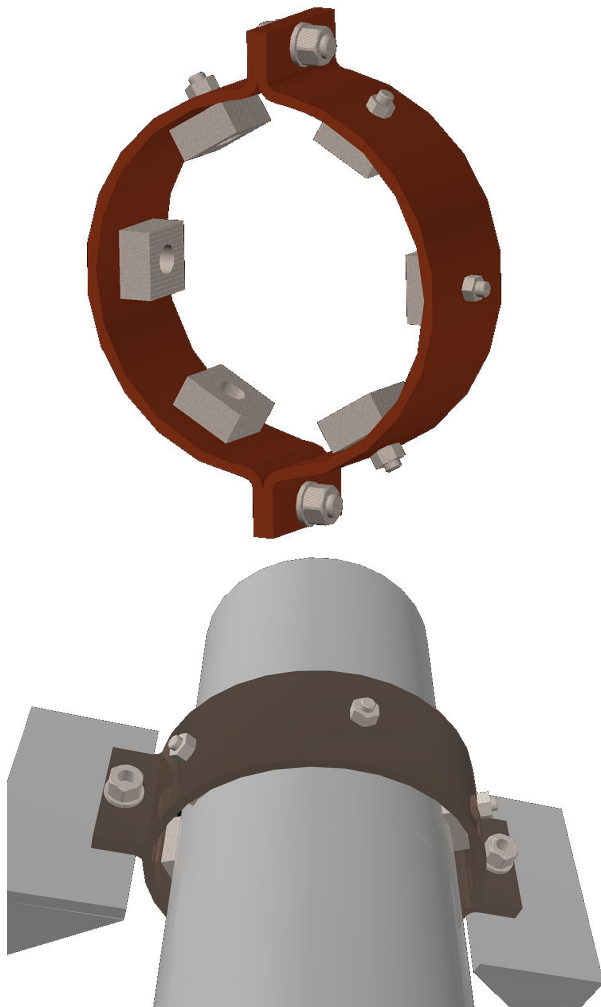
#### Note

The cushions can be ordered separately, see data sheets for VT 1110-1130, VT 1120-1140.

#### Characteristics

A very rigid construction that allows quick mounting/dismounting of the pipes.

The resilient elements are non-creeping, unaffected by oils, grease, corrosive agents, and extremes of temperature. If required, it is possible to have the cushions produced in higher quality stainless steel or in other materials.



DN	R	Elements	B	C	F	T
100 (Ø114,3)	77	6 × VT1140	50	220	242	6
125 (Ø139,7)	90	6 × VT1140	50	246	268	6
150 (Ø168,3)	104	8 × VT1140	50	274	296	6
175 (Ø193,7)	117	8 × VT1140	50	300	322	6
200 (Ø219,1)	135	6 × VT1120	70	336	371	8
250 (Ø273,0)	162	6 × VT1120	70	390	425	8
300 (Ø323,9)	187	8 × VT1120	90	450	476	8
350 (Ø355,6)	203	8 × VT1120	90	482	508	8
400 (Ø406,4)	228	8 × VT1120	90	524	558	8
450 (Ø457,0)	254	10 × VT1120	90	574	609	8
500 (Ø508)	279	10 × VT1120	100	626	694	10
550 (Ø559)		10 × VT1120	100	676	745	10
600 (Ø610)	330	10 × VT1120	100	728	796	10
700 (Ø711)	380	12 × VT1120	100	828	897	10
800 (Ø813)	431	12 × VT1120	120	930	999	10
900 (Ø914)	482	16 × VT1120	120	1032	1100	10
1000 (Ø1016)		16 × VT1120	120		1202	10