



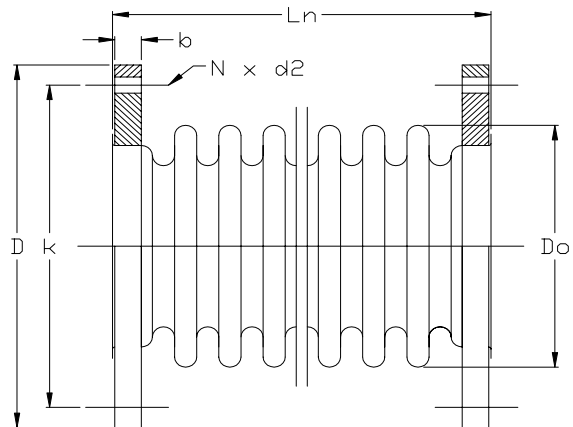
Temperature > 600°C
 Design pressure > 1,0 BarG
 Produced acc. to EJMA-standard
 Turnable flanges or stub ends
 Other specifications at request

Technical specification at 350°C:

Type	Max. movement (+/-)		Max. reaction force		Spring rate	
	Axial (mm)	Lateral (mm)	Axial (daN)	Lateral (daN)	Axial (N/mm)	Lateral (N/mm)
VTAS-0040	21	20	137	22	65	11
VTAS-0050	23	17	122	20	53	12
VTAS-0065	29	16	165	34	57	21
VTAS-0080	30	15	171	38	57	25
VTAS-0100	36	12	209	90	58	75
VTAS-0125	33	11	162	77	49	70
VTAS-0150	39	11	207	119	53	108
VTAS-0175	43	10	249	164	58	164
VTAS-0200	43	9	482	353	112	392
VTAS-0250	53	10	541	456	102	456
VTAS-0300	53	8	541	518	102	648
VTAS-0350	53	7	689	713	130	1018
VTAS-0400	61	8	641	654	105	818
VTAS-0450	61	7	714	804	117	1148
VTAS-0500	64	7	768	984	120	1405
VTAS-0550	75	9	825	1076	110	1195
VTAS-0600	68	7	721	1077	106	1539
VTAS-0700	82	8	1427	1970	174	2462
VTAS-0800	82	7	1320	2157	161	3081
VTAS-0900	96	8	1469	2267	153	2834
VTAS-1000	96	8	1603	3066	167	3833
VTAS-1100	96	7	1747	3547	182	5067
VTAS-1200	110	8	1892	3682	172	4603

Expansion joints

Bellow: AISI 321 (1.4541) steel (2 layer).
Flanges: RSt.37.2. DN40 - DN175:
 acc. to DIN 2573 (PN6)
 DN200 - DN1200: acc. to DIN 86044
 Other standards or material at request.



Type	Ln (mm)	Flanges acc to DIN 2573 (PN6)						Weight (kg)
		D (mm)	b (mm)	k (mm)	N (ant.)	d2 (mm)	Do (mm)	
VTAS-0040	165	130	16	100	4	14	60	3,5
VTAS-0050	170	140	16	110	4	14	71	4
VTAS-0065	170	160	16	130	4	14	88	4,5
VTAS-0080	180	190	18	150	4	18	101	7
VTAS-0100	140	210	18	170	4	18	129	8
VTAS-0125	165	240	20	200	8	18	156	10,5
VTAS-0150	165	265	20	225	8	18	187	12,5
VTAS-0175	165	295	20	255	8	18	212	13,5
		Flanges acc. to DIN 86044						
VTAS-0200	150	320	16	280	8	18	240	12
VTAS-0250	165	375	16	335	12	18	296	15
VTAS-0300	165	440	16	395	12	22	349	17,5
VTAS-0350	165	490	16	445	12	22	379	24,5
VTAS-0400	200	540	16	495	16	22	432	27,5
VTAS-0450	200	595	16	550	16	22	483	32
VTAS-0500	190	645	16	600	20	22	534	34
VTAS-0550	225	703	20	650	20	22	585	48,5
VTAS-0600	215	754	20	700	20	22	640	52,5
VTAS-0700	250	858	20	800	24	22	741	67,5
VTAS-0800	250	958	20	900	24	22	785	79
VTAS-0900	280	1060	20	1010	28	22	949	88
VTAS-1000	280	1162	20	1110	32	22	1051	97,5
VTAS-1100	280	1266	20	1210	32	22	1155	107
VTAS-1200	310	1366	20	1310	36	22	1255	116

Norway

P.O.Box 765, N-3196 Horten, Norway
 Tel: +47 33 07 07 50 Fax: +47 33 07 00 68
 e-mail: apn@apn.no

Sweden

Norrund 1859, S-760 17 Blidö, Sweden
 Tel: +46 176 20 78 80 Fax: +46 176 20 78 99
 e-mail: info@vibratec.se