

Series A10



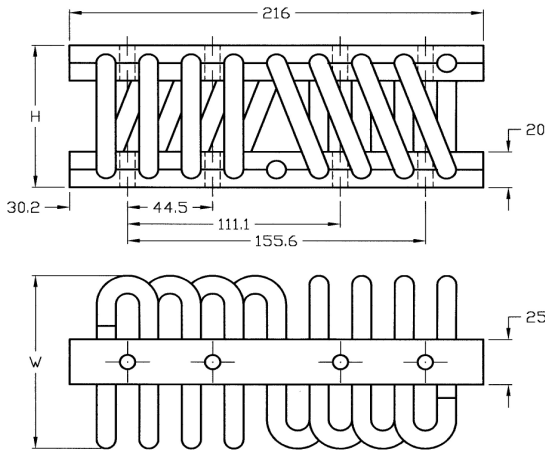
APN CABLE MOUNTS

Combined all-metal multidirectional antivibration and anti-shock mounts

- No aging
- Corrosion resistant
- High inherent damping
- Very low amplification at resonance
- Severe shock attenuation
- Wide temperature range (-180°C to +300°C)
- Maintenance free

Typical Applications:

Series A10 - Standard Series - Dimensions Pressed Design



The number of wire rope loops can be less than 10, f.inst. 4, 6 or 8, where at the load range is correspondingly reduced.

Cable mount type number	Height (H) (mm)	Width (W) (mm)	Mass (kg)
A100216-108	108	121	1.50
A100216-092	92	108	1.35
A100216-080	80	104	1.25
A100216-077	77	90	1.20
A100216-074	74	84	1.15

FIXTURE HOLES	Upper bar	Through holes 9 mm	Through holes, countersunk	Inserts M8
	Lower bar			
Through holes 9 mm		II	IY	IM
Through holes, countersunk		IY	YY	YM
Inserts M8		IM	YM	MM

Each cable mount has six alternative configurations with regard to fixture holes (ref. table to the left). When ordering, make your choice and add the required hole configuration code to the type number.

Example:
A100216-108-YY

- ▶ Resilient Suspensions meeting Military Standards
- ▶ Isolation of Sensitive Electronic Equipment
- ▶ Isolation of Generators, Pumps and Compressors
- ▶ Exhaust System Suspension
- ▶ Isolation of Cabinets, Containers, etc.
- ▶ Protection of Equipment during Transport
- ▶ Extreme Temperature Applications

Load mode: **Compression**

Typical load range: 35 - 150 kg

Cable mount type number	Rated load at 10 Hz (kg)	Max. static load (kg)	Max. dyn. travel (mm)
A100216-108	45	93	65
A100216-092	66	114	50
A100216-080	84	123	40
A100216-077	112	156	37
A100216-074	133	175	34

Load mode: 45° **Compression/roll**

Typical load range: 25 - 90 kg

Cable mount type number	Rated load at 10 Hz (kg)	Max. static load (kg)	Max. dyn. travel (mm)
A100216-108	27	66	92
A100216-092	39	80	71
A100216-080	50	87	56
A100216-077	66	110	52
A100216-074	79	124	48

Load mode: **Shear and roll**

Typical load range: 5 - 35 kg

Cable mount type number	Rated load at 12 Hz (kg)	Max. static load (kg)	Max. dyn. travel (mm)
A100216-108	7	40	68
A100216-092	11	48	53
A100216-080	14	52	42
A100216-077	18	66	39
A100216-074	21	74	36

Sweden
 Tel: +46 176 20 78 80
 e-mail: info@vibratec.se

Norway
 Tel: +47 33 07 07 50
 e-mail: info@vibratec.no

Denmark
 Tel: +45 49 13 22 44
 e-mail: info@vibratec.dk

Estonia
 Tel: +372 56 66 29 93
 e-mail: info@vibratec.ee